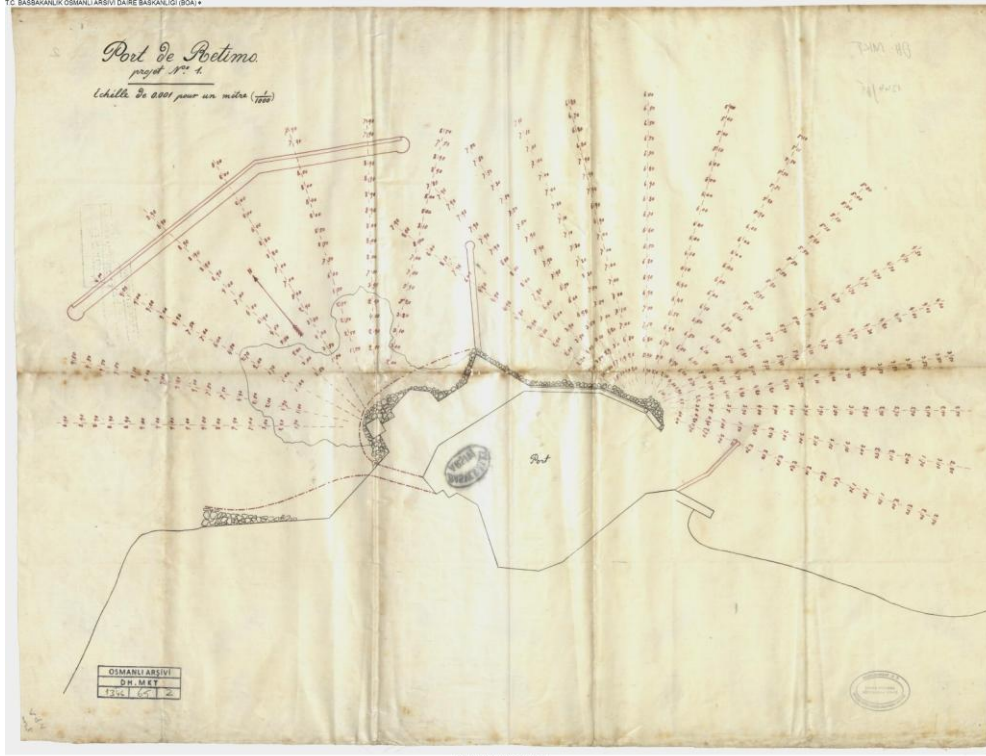




## THE AMERICAN RESEARCH INSTITUTE IN TURKEY

Şehit Ersan Cad. 24.9 06680 Çankaya, Ankara  
Tel: (312) 427 2222; Fax: (312) 427 47979 (prefix outside Turkey: 90)  
aritankara@gmail.com



## The Port of Rethymno and Its Architectural Heritage

by

**Ayşegül Özer**

Özyeğin University, Dept. of Architecture

Istanbul Bilgi University, Meslek Yüksekokulu, Dept. of Architecture and City Planning

**Monday, May 3, 2021**

**at 7 P.M. (UTC+3)**

Located on the northern coasts of Crete Island in Greece, at the centre of the homonymic region (ΔΡ, 15.02.2019), the historic town of Rethymno is a protected site according to Greek Legislation. The urban texture consists of varying historical periods, ranging from the Venetian, to the Ottoman and the Modern Greek, enriching the cultural value of the city. The port of Rethymno, in this context, played a significant role in the establishment and the sustainability of the city throughout time. This presentation aims to provide a glimpse on the evolution of the port, with specific focus on its architectural heritage components.

The data presented here generates from the field and the archival research for my Ph.D. thesis, *Conservation Policies in Greece and Turkey for Architectural Heritage of 1923 Lausanne Treaty Exchanged Population: Comparative Study For Cities of Rethymno and Ayvalik*, which I am conducting at the Interdepartmental Program of Postgraduate Studies "Protection Conservation and Restoration of Cultural Monuments", Direction A': Protection, Conservation and Restoration of Architectural Monuments, Faculty of Engineering, Aristotle University of Thessaloniki. Historic texts, such as manuscripts, travelogues, were cross-referenced with visual material, such as photographs, gravures, for determining certain components, among which are lost heritage buildings and irreversible physical changes at the port. This presentation will discuss information and results of research for a better understanding of the historic value and the potentials of the Port as a key heritage site on Crete.

The lecture will take place on Zoom.

Registration: <https://zoom.us/meeting/register/tjcsd-6tpzooHtDkJ5qYbruy4gwRI47b4GgP>